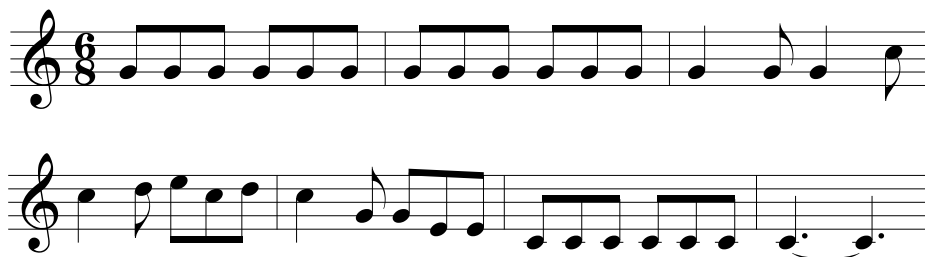


TON POUR CHIEN

*Que l'on Sonne pendant que les chiens
Chassent.*

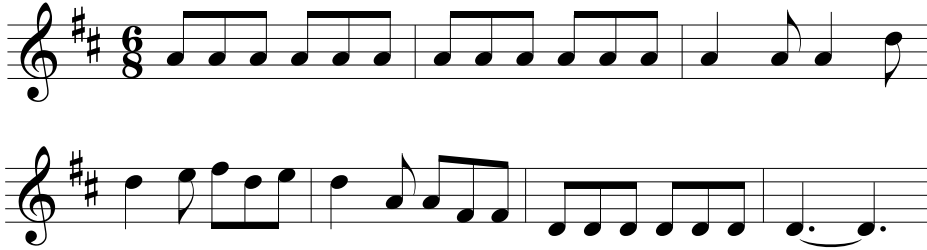
**AUTRE TON POUR CHIEN**

Que l'on sonne comme le precedent.

Four staves of musical notation in 6/8 time. The first staff contains a melody: G4, A4, B4, C5, B4, A4, G4, F4, E4, D4, C4. The second staff contains a bass line: G3, F3, E3, D3, C3, B2, A2, G2, F2, E2, D2, C2. The third staff contains a melody: G4, A4, B4, C5, B4, A4, G4, F4, E4, D4, C4, with a sharp sign above the final note. The fourth staff contains a bass line: G3, F3, E3, D3, C3, B2, A2, G2, F2, E2, D2, C2.

TON POUR CHIEN

*Que l'on Sonne pendant que les chiens
Chassent.*



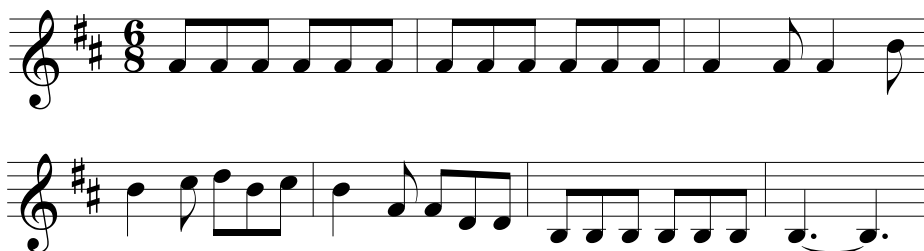
AUTRE TON POUR CHIEN

Que l'on sonne comme le precedent.

Four staves of musical notation in G major (one sharp) and 6/8 time. The first staff begins with a treble clef, a key signature of one sharp (F#), and a 6/8 time signature. The melody consists of quarter and eighth notes. The second staff continues the melody. The third staff continues the melody, featuring a sharp sign above the final note of the phrase. The fourth staff concludes the piece with a double bar line.

TON POUR CHIEN

*Que l'on Sonne pendant que les chiens
Chassent.*

**AUTRE TON POUR CHIEN**

Que l'on Sonne comme le precedent.

Four staves of musical notation in G major (one sharp). The first two staves show a melody with quarter and eighth notes. The third and fourth staves show a bass line with quarter and eighth notes, ending with a double bar line.